

# Creating Jobs. Changing Lives.





Wadhvani Foundation

## Creating Jobs, Changing Lives

The non-profit operates globally to boost economic expansion in emerging economies. It promotes job creation through extensive initiatives in entrepreneurship and skill development. The organization also supports digitizing government services and advancing academic innovations to achieve commercial success and widespread societal impact.

ASIA



AFRICA



LATIN AMERICA



U.S.A





**Over two decades we have focused  
on a simple, powerful mission:**

**To accelerate job growth and enable millions to earn  
a family-sustaining wage leading to a life of dignity.**

# Our initiatives



## Entrepreneurship

Enables aspiring and practicing entrepreneurs to start, survive, and thrive through customized interventions



## Skilling

Upskills job-seekers, fresh hires and existing employees with in-demand emerging skills to secure a family-wage job and achieve ongoing success at the workplace



## Innovation & Research

Acceleration of academic innovation in emerging technologies leading to commercialization of innovations and research



## Government Digital Transformation

Upskill and hand-hold Govt. Organizations with emerging technologies to accelerate population-scale digital solutions and craft new-age policies

### Our beneficiaries:

Students | Startups | Small Businesses

Job Seekers | Employees

Faculty | Post-Docs | Ph.D Students

Government Officials | Policymakers

# Our programs

Our Programs are designed to accelerate job growth and enable millions to earn a family-sustaining wage and lead a life of dignity.



## **Ignite** **(for students entrepreneurs)**

Equipping students with skills, knowledge, and experiential learning to get them started on their entrepreneurial path.



## **Liftoff** **(for startups)**

Tailored guidance to enable startups build compelling strategies & get funding



## **Accelerate** **(for small businesses)**

Enable businesses to identify growth opportunities, develop plans, and accelerate growth.



## **Employability Skills** **(for job-seekers)**

Upskills the vulnerable with workplace and in-demand business skills.



## **Wadhvani Government Digital Transformation**

Upskill and hand-hold Govt organizations to accelerate population-scale projects.



## **Wadhvani Innovation Network**

Aims to fast-track the commercialization of academic research to shape the future of innovation.



## **Wadhvani AI**

Building and deploying AI solutions for social good.



## **Wadhvani Electronic Laboratory**

Experiential Lab at IIT Bombay to build impactful innovations in electronic systems and replicate the model across other Institutes.

# Our philosophy

---

To avoid mission dilution, the Foundation takes no external funding

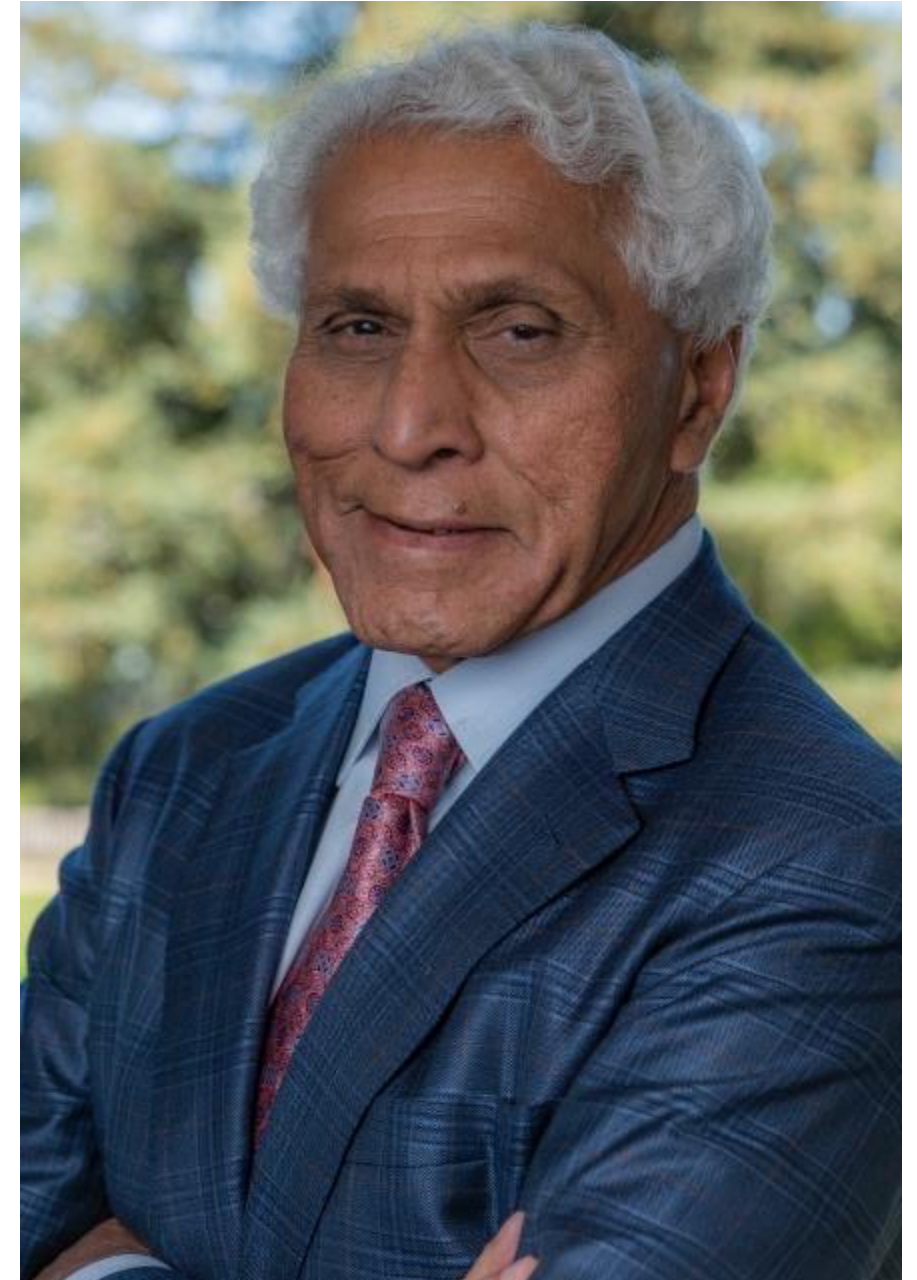
## Operational model

- The Foundation operates its own high-impact programs in partnership with ecosystem partners
- Services are offered at no charge to the Partners and the beneficiaries
- The Foundation is solely funded by the philanthropy of its Founder and Chairman, Dr. Romesh Wadhvani
- Dr. Wadhvani has committed to donating 80% of his billions of dollars to the foundation

## Dr. Romesh Wadhvani

Founder and Chairman

- Padma Shri 2020 awardee (Amongst the highest civilian awards in India)
- President Obama appointee to the Board of Trustees of the John. F. Kennedy Center
- Founding Chairman and CEO of \$3.5 billion Symphony Technology Group
- Founding Chairman of AI software firm Symphony AI (2017)
- Founding Chairman of AI life sciences firm ConcertAI (2017)
- Founding Chairman of SAIGroup investment firm (2021)
- Board member Anusandhan National Research Foundation India (2024)



# Board of directors & advisors

A formidable assembly of seasoned experts, providing invaluable counsel and strategic insights.

## Global Board of Directors



**Dr. Romesh Wadhvani**  
Founder and Chairman



**Dr. Ajay Kela**  
President and Chief Executive Officer



**Aditya Ghosh**  
Co-Founder, Akasa Air



**CP Gurnani**  
Co-founder & Executive Vice Chairman, AlonOS

## India Board of Advisors



**Sanjeev Bhikchandani**  
Founder & Executive Vice Chairman, Info Edge



**Ganesh Krishnan**  
Chairman, Portea Medical



**Pramod Bhasin**  
Chairman, Data Security Council of India & ICRIER

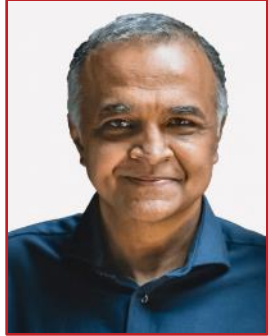


**Musthafa P.C.**  
CEO & Co-founder, iD Fresh Food

# Leadership team



**Dr. Ajay Kela**  
President and Chief  
Executive Officer



**Meetul B Patel**  
President,  
Entrepreneurship & Govt.  
Digital Transformation



**Sunita Singh**  
Executive Vice President  
& Co-founder - NEN



**Sanjay Shah**  
Chief Operating Officer,  
India & Southeast Asia



**Prakash Kumar**  
Chief Executive Officer,  
Govt. Digital  
Transformation



**Sunil Dahiya**  
Executive Vice President,  
Skilling



**Rajeev Warriier**  
Executive Vice President,  
Entrepreneurship



**Mark Malaspina**  
Chief Product Officer,  
Skilling



**Lijo Isac**  
Chief Product Officer,  
Entrepreneurship



**Anupama Mukherjee  
Rawat**  
Chief Marketing Officer



**Rohit Nayyar**  
Chief Financial Officer



**Gaurav Saini**  
Chief Human Resource  
Officer



**Dr. Shirshendu  
Mukherjee**  
Managing Director - WIN



**Ravi Shankar**  
Executive Vice President,  
Networks



**Praveen Srivastava**  
Executive Vice President -  
Micro Entrepreneurship

# Our guiding principles

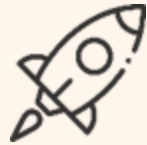
---

Embedded in our DNA, our guiding principles direct our actions in everything we do.



## **Beneficiary-centric Approach**

Treat all the beneficiaries as valued clients, striving to meet their needs and exceed their expectations.



## **Innovation at Scale**

Foster a culture of ambitious thinking and innovation to create a widespread, meaningful impact.



## **Global Vision Local Execution**

Maintain a global perspective in strategy, coupled with a commitment to localized operations.



## **Collaborative Ecosystem**

Actively collaborate with the government, academia, and industry to maximize impact and reach.

# Our approach

---

The Foundation is scaling impact through our GenAI-based GenieAI Platform, innovative programs, and expansive global network of partners, driven by the passion and urgency of our 200+ talented global corporate-culture team.

## Technology

Our cutting-edge AI-powered platform, GenieAI, enables personalized knowledge acquisition, learning, and access to an expert global network along with other resources.



## Partnership

The Foundation extends its capabilities and the depth and breadth of its impact through an extensive network of partners, including governments, academia, corporations, industry mentors and experts, investors, NGOs, and industry associations.



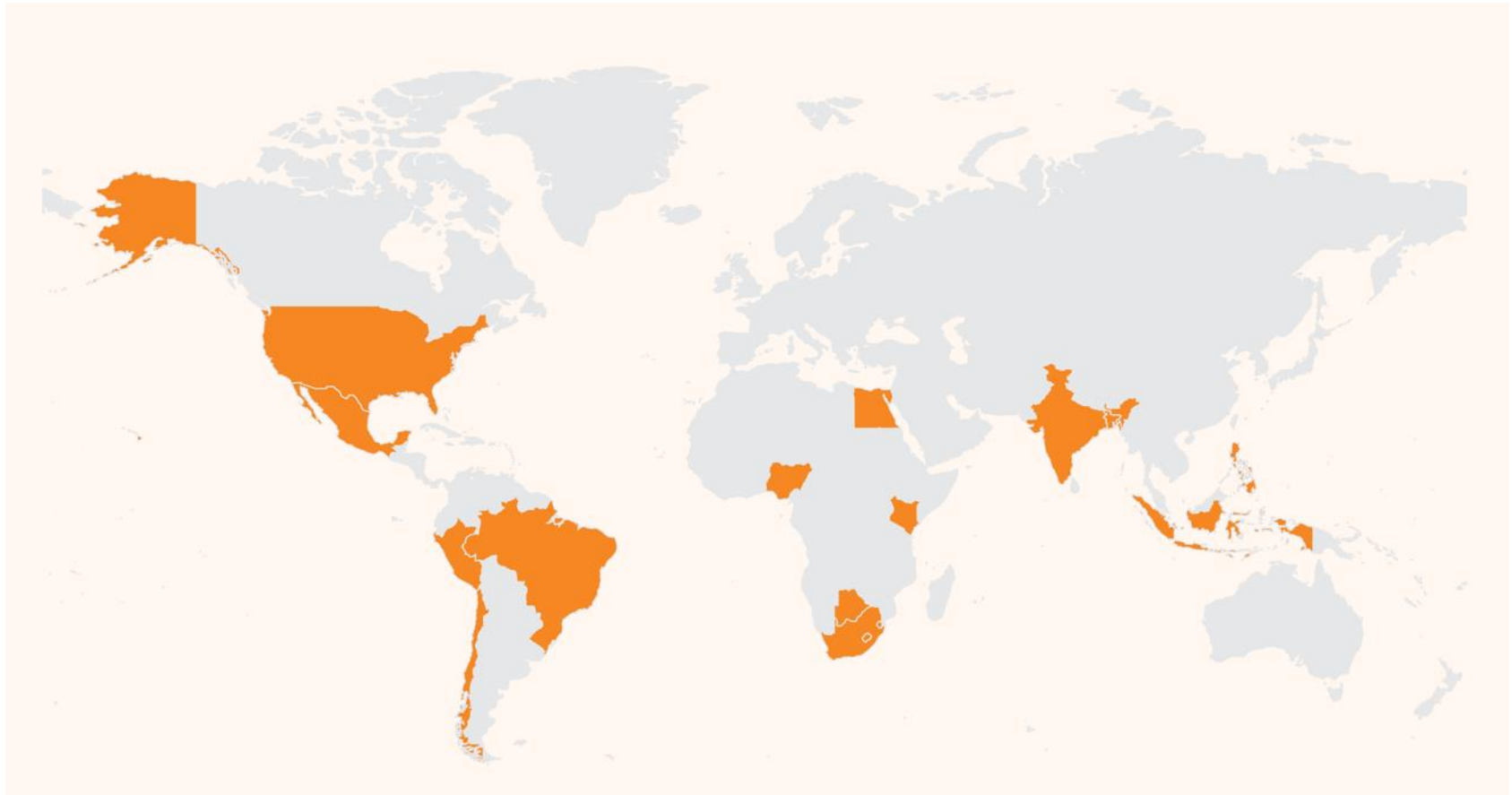


# Our presence

---

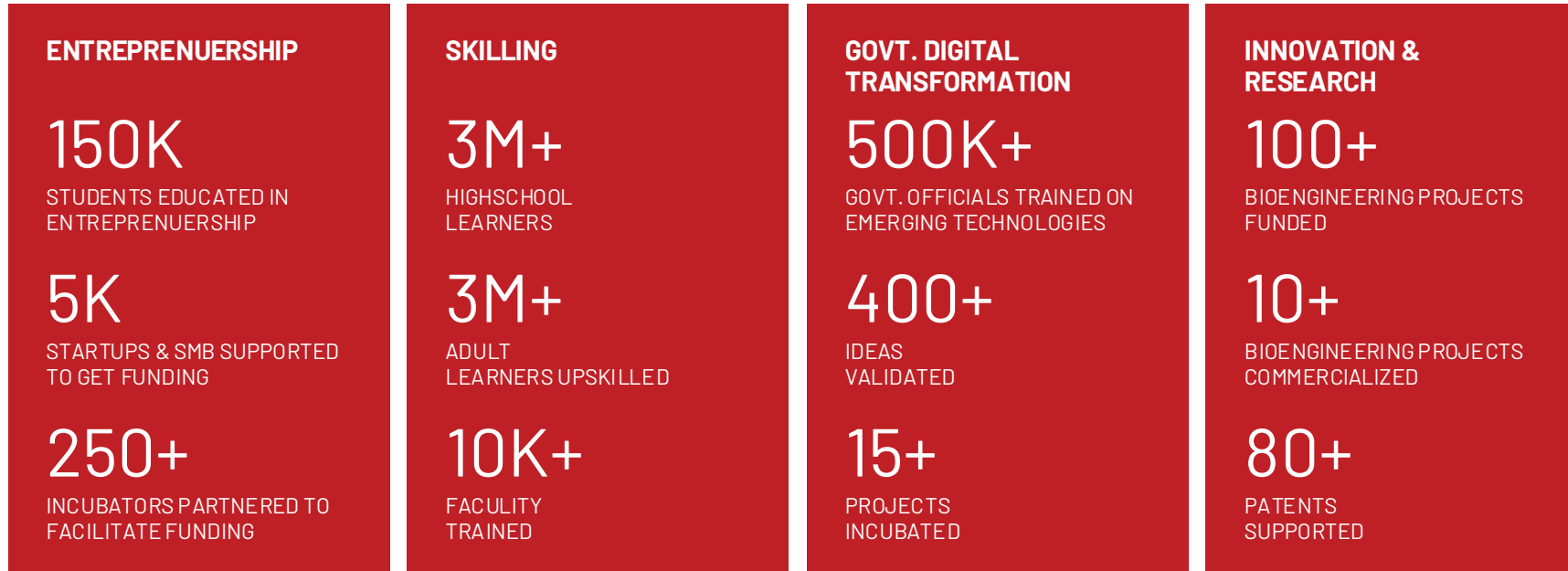
Through its four core initiatives, the Foundation has positively impacted millions across 15+ countries in Asia, Africa, North America, and Latin America

**B**ANGLADESH  
**B**OTSWANA  
BRAZIL  
**C**HILE  
**E**GYPT  
**E**SWATINI  
INDIA  
**I**NDONESIA  
KENYA  
**L**ESOTHO  
**M**EXICO  
**N**IGERIA  
PERU  
PHILIPPINES  
**S**OUTH AFRICA  
**U**SA



# Our current and planned impact

In the last five years, the Foundation's direct impact through engagement and support includes:



Continuing to accelerate impact our 2027 Objectives include:



## Our Scale and Impact Levers:

- A GenAI-based EdTech Platform accelerates scale and offers personalized intervention (details follow)
- 1000+ hours of multi-media skilling and entrepreneur content.
- An army of experts, including mentors, coaches, and service providers.
- Federal and state government partnerships and a vast network of global ecosystem partners (details follow).

# Unique advantages of our GenieAI platform

## Personalized and adaptive, powered by GenAI

Best-in-class technology operating seamlessly in multiple languages.



## Community forums

Vibrant learner communities for specific regions and market segments.



## Masterclasses

Sessions from industry experts, both streaming and on-demand.



**Comprehensive tools  
to accelerate learning,  
knowledge acquisition,  
and growth of students,  
professionals, and  
businesses.**

## Mobile-first delivery

Mobile content available anytime, anywhere.



## Expert networks

Matching with experienced mentors/experts who can provide insight and guidance on business challenges and career growth.



## Rigorous assessments

Evaluation of skill mastery, for successful outcomes.



# Our extensive partner ecosystem

Some of our 500+ global partners.

MENTORS  
 EDUCATIONAL  
 INSTITUTES  
 INDUSTRY  
 EXPERTS  
 SCHOOLS  
 GOVERNMENT  
 INVESTORS  
 CORPORATES  
 INCUBATORS  
 INDUSTRY  
 ASSOCIATIONS  
 NGO'S  
 ACCELERATORS



# Verbatim...

A glimpse into the many lives the Foundation has impacted.



*"Wadhvani Liftoff not only provides the necessary tools but also a supportive environment for startups to grow and thrive"*

**- Sheetal & Priyanka, Co-Founders, Up Troop, India**



*"The Wadhvani Foundation's employability skills course was really a game changer, it covered everything from communication to problem solving & adaptability and trained me with real world practical scenarios."*

**- Muhammad Rakib Hussain, Student, Jagannath University, Bangladesh**



*"I am impressed by the marked improvement in the students' attitude due to the WF NEN entrepreneurship course and I am looking forward to rolling out the program across the entire campus in the coming semester."*

**- Lucy Kibe, Team Leader, MKU, Nairobi**



*"The program provided mentoring and helped us in understanding the pain points of the customer, making a prototype and getting validation"*

**- Shraman Pal, Student Venture: Wholesome, IIT Kharagpur, India**



*"This course by the Wadhvani Foundation really helped us grow and prepared us for enhanced career prospects, including successful job interviews."*

**- Claudia Andrea, Secretary of Education, São Paulo State, Mexico**



*"The WF NEN program has drawn students from across disciplines and moulded them into one team. Students are benefiting daily from entrepreneurship-led skills, never-before seen in the university. E Cell registration has grown as more students are keen to share ideas on business."*

**- John Kamau, The CEO MKU Street Smarter E Cell, Nairobi**



*"Gratitude to the Wadhvani Foundation for empowering our students with skill-enhancing training courses."*

**- Prof. Felipe, Faculty, Secretary of Education, São Paulo State, Mexico**



*"The entrepreneurial boot camp by Wadhvani turned out to be a starting point of my journey as an entrepreneur and helped me transform my idea into a real venture"*

**- Sukesh JR, CEO & Co-Founder, Chef@Home, India**



*"WF NEN program is being offered to all students as a free package to enhance their abilities and to become self-reliant at the close of their campus life."*

**- Prof. Stanley Waudu, The Vice Chancellor - Mount Kenya University**



Thank you

Together, let us craft a future where everyone can thrive!



# Our entrepreneurship programs



[Click here to watch a short video](#)

This initiative drives impact through the following key flagship programs:

**Ignite** (for student entrepreneurs)



Equips students with the knowledge, skills & experiential learning needed to embark on an entrepreneurial journey.

**Liftoff** (for startups)



Offers guidance from industry experts to refine brand visibility, product roadmaps & go-to-market strategies, ultimately helping them secure funds.

**Accelerate** (for businesses)



Provides businesses with resources to identify growth opportunities, develop plans & accelerate growth.

**150K+**

Students educated  
in Entrepreneurship

**1K+**

Institutes teaching  
Entrepreneurship

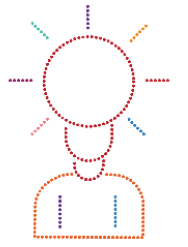
**250K+**

Incubators partnered to  
facilitate funding

**5K+**

Startups and SMEs supported  
to get funding

# Our skilling programs



[Click here to watch a short video](#)

This initiative drives impact through the following key flagship programs:

## Career advisory (for student)



Helps students make informed decisions and identify the right courses, job roles and salary expectations.

## Employability skills (for students & employers )



Expert-designed employability programs that prioritize workplace practicality, enhancing skills and career prospects.

## Business skills (for students & employers )



Skills to succeed in in-demand and sector-specific careers such as AI, retail, hospitality and healthcare.

**3M+**

Adult learners taking our employability skills courses

**3M+**

High-school learners

**10K+**

Teachers trained

# Our innovation & research programs



[Click here to watch a short video](#)

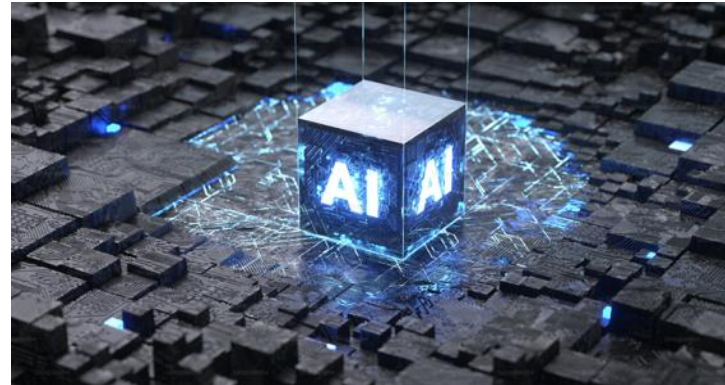
This initiative drives impact through the following key flagship programs:

## Wadhvani Research Center for Biotechnology, IIT Mumbai



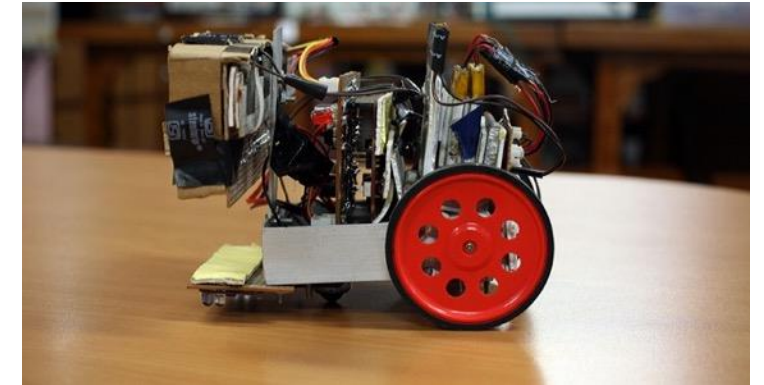
Research center in bioengineering at IIT Bombay driving commercialization of academic research.

## Wadhvani AI



Building and deploying AI solutions for social good.

## Wadhvani Electronics Lab (WEL), IIT Mumbai



Experiential Lab at IIT Bombay to build impactful innovations in electronic systems and replicate the model across other Institutes

**100+**

Bioengineering projects funded

**80+**

Patents supported

**140+**

Publications

**10+**

Bioengineering companies commercialized

**20K+**

Student beneficiaries

**250+**

Research assistants

**300+**

Hardware kits manufactured

# Our government digital transformation programs



[Click here to watch a short video](#)

This initiative works with governments through the following streams:

## Wadhvani Government Digital Transformation Center (India)



Enables government departments and officials to accelerate their digital transformation through a tech-focused Skilling Academy; a live Incubation Center to develop, pilot and launch national/state-level digital initiatives with to create population scale impact.

## Wadhvani Center for AI and Advanced Technologies (USA)



In-depth research, analysis, and policy recommendations to equip policymakers and government officials with a better understanding of rapidly evolving technology ecosystems and their impacts on U.S. national security.

**500K+**

Officials trained on emerging technologies

**400+**

Ideas validated

**150+**

Workshops conducted

**15+**

Projects incubated